

GPS Instruction Manual for Locator

● Functions:

Remote pickup, remote recording, voice control callback, voice control recording, HD silicon microphone WiFi + LBS + AGPS positioning, real-time tracking, historical tracks, vibration anti-theft alarm, electronic fence, built-in strong magnetism, multiple power saving modes, low-power alarm, remote on / off AAP + computer terminal + short message operation

1. Preparation before use

1. Check whether the equipment model is correct and whether the accessories are complete.
2. Select GSM network card or Nano SIM card of Internet of Things (CDMA telecommunication card is not supported); GSM card is required to be enabled with the functions of GPRS, SMS and caller ID.
3. Start - up: For key-press host, press the key and hold for 3 seconds to start up; if no key, install SIM card and the device starts up, and the red light will flash slowly for 30 seconds before the device goes online.
4. Shutdown: For key-press host, press the key and hold for 3 seconds to shut down the device; if no key, unplug the SIM card, the device shuts down automatically 30 seconds later, and the red light goes out.

2. Install APP on mobile phone:

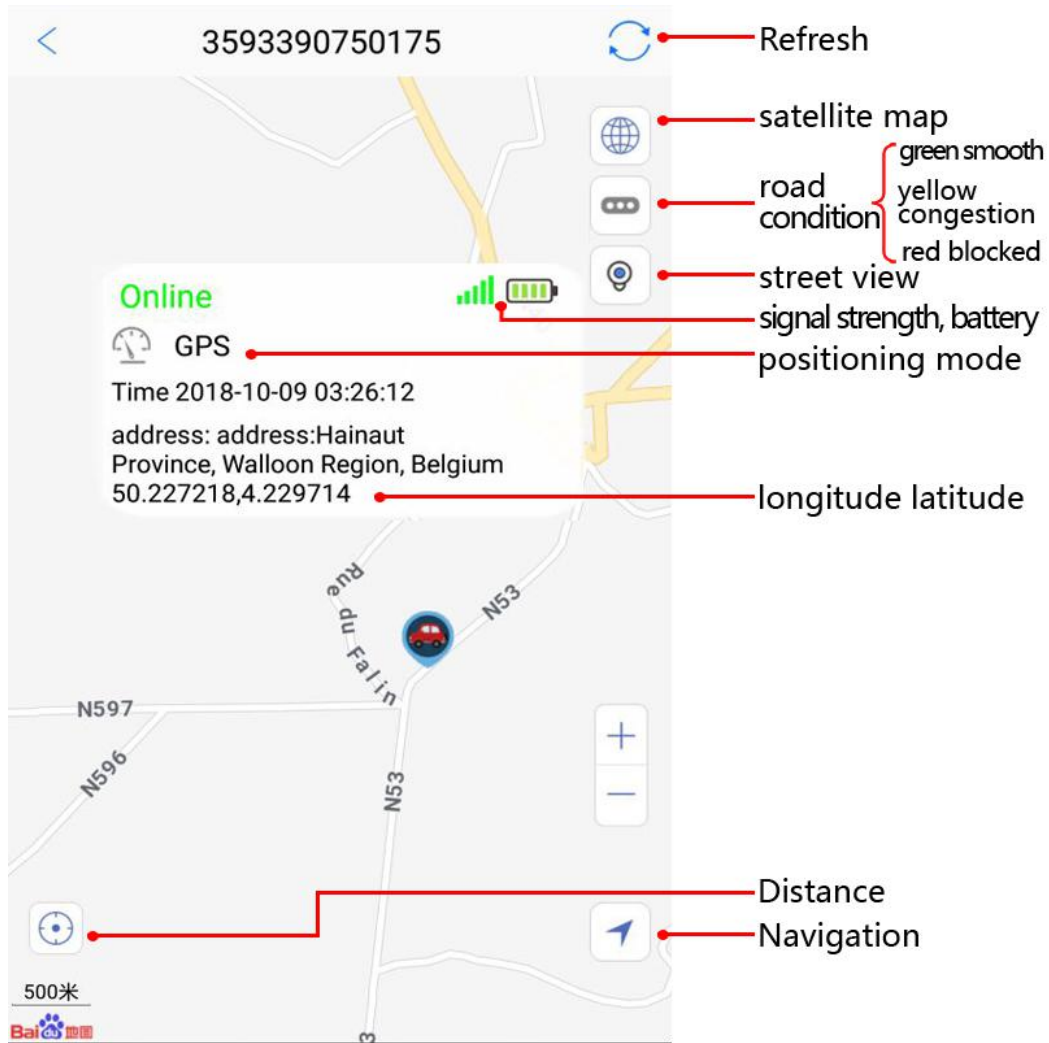


(Android, iOS) app search GPS365

PC terminal: www.365GPS.com

1. APP-platform login: The barcode on the device is 15 - digit account number or scanning device barcode, IMEI and password (the factory default is 123456)

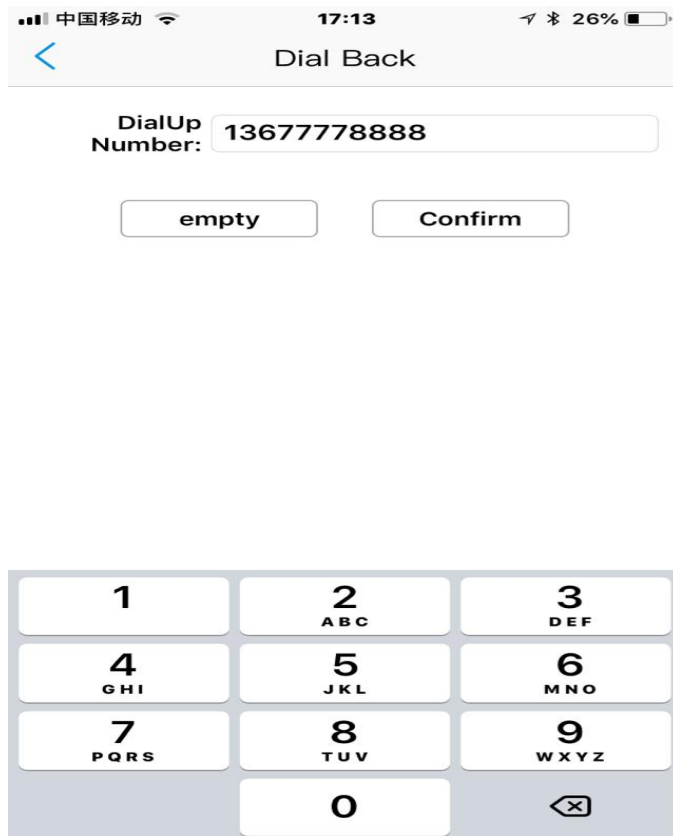
1. Click to locate:



(Priority WiFi positioning precision).

3. Pickup (voice card supporting communication, not flow card)

1. Set the remote pickup number - click on Pickup



The device can dial the pickup number you set and you can answer, and the setting is successful. You can also dial directly with the master number.

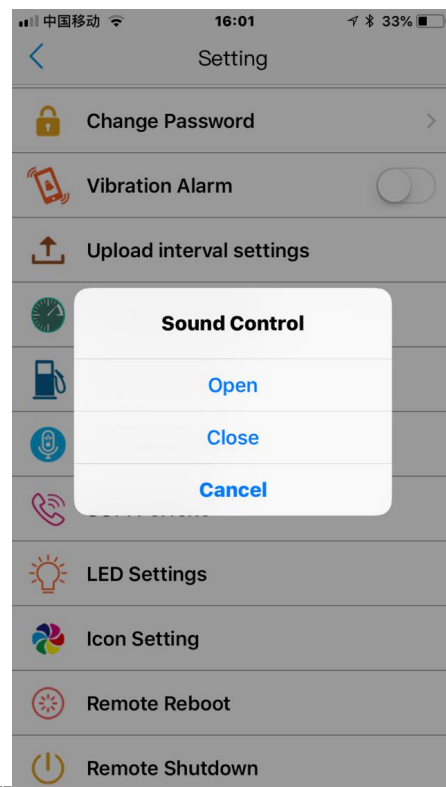
4. APP listening to live recordings of remote device:



1. Click - information



(click once to listen for 10 - 15 seconds)



2. Voice control recording-- setting--

The device records automatically if 60 db are detected. Loop recording with 10 min each
(send to app if without a memory card)

SMS Commands			
Function	Edit SMS command	Example	Remarks
Binding master number	000#number# number# number#	000#1381234567 8#	Up to three cell phone numbers are supported to be bound; dial the device from three cell phone numbers can realize pickup; you can also bind one cell phone number
SMS recording	111	Reply: Start recording 10	Record once, 10 min (for products with memory card)
Voice control recording	222	Reply: Voice control recording 10	The device monitors 60 db and automatically records. Loop recording, 10 min each (send to app if without a memory card)
Voice control callback	333	Reply: Voice control telephone alarm	The device monitors 60 db and automatically dials the master number.
Turn off all functions	555	Reply: Turn off all functions	
Vibration alarm message	666	Reply: Vibration SMS alarm	The device automatically sends SMS to the master number when it detects vibration.
Vibration alarm call	777	Reply: Vibration call alarm	The device automatically dials the master number when it detects vibration.
Recording 10 seconds and upload to app	789	Reply: Send recording 10	Operation and playback of recordings on app

SMS positioning	999	Reply: device location	Location of the device (priority WiFi - AGPS - LBS)
Modifying the second positioning upload interval	Md #秒# Md #seconds#	Reply: MD#10#-OK	10-60 seconds supported
Modify the minute upload interval	Time#分钟 Time#minutes	Reply: time#	1-120 minutes supported
Heartbeat packet time setting	heartbeat#时间# heartbeat#time#	Reply: heartbeat#time#	Data uploading by the device each time and online status 10-120 seconds supported
Enabling track upload	123#1	Reply: OK/ON	Track upload is not enabled by default; send SMS to enable it
Disabling track upload	123#0	Reply: OFF	
Factory password reset	pwrst		123456
Reset	1122	Reply: OK	The device is OK in 1 minute
Check IMEI number	imei#	15-digit number	If the IMEI barcode is lost, it can be retrieved by sending SMS
Restart the	SYSRST#	Reply: Restart	

device		in 1 minute	
Setting LED on/off	LED#on/LED#off	Reply: ON OFF	LED#on/Turn on LED light/LED#off/Turn off LED light
Charging and automatic starting			When the device is in a low-battery shutdown state, connect it to power supply and it can start automatically if the voltage reaches 3.7V.